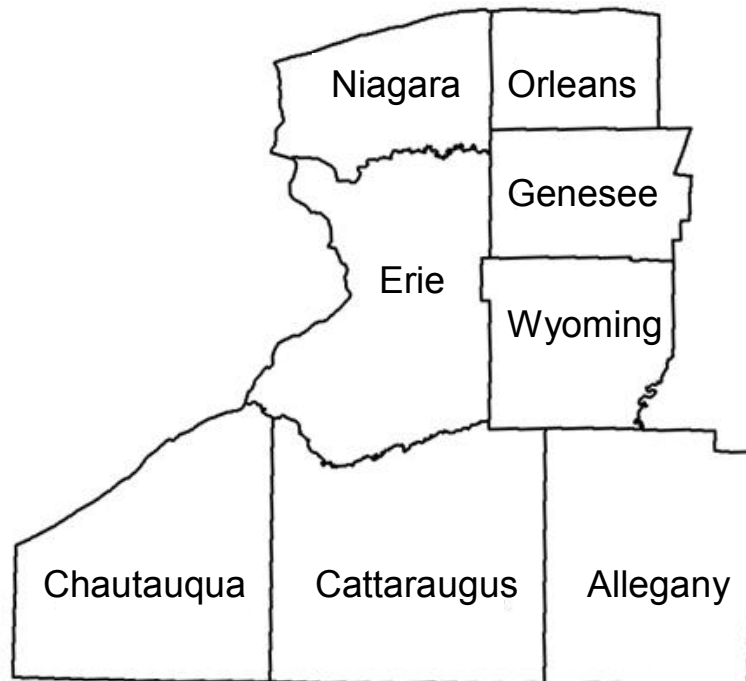


The Western New York Health Risk Assessment Trend Report

2004-2005

A REPORT ON BEHALF OF THE
WESTERN NEW YORK PUBLIC HEALTH ALLIANCE

PREPARED BY
THE PUBLIC HEALTH OBSERVATORY
AND
THE DEPARTMENT OF FAMILY MEDICINE



ACKNOWLEDGMENTS

This study was funded by **Health for All, Inc.** through grants from the Community Health Foundation of Western and Central New York, Inc. and the U.S. Department of Health and Human Services, Health Resources and Services Administration, Community Access Program. Subcontracts were awarded to the Department of Family Medicine Research Institute and the School of Public Health and Health Professions, University at Buffalo (**Laurene Tumiel-Berhalter** and **Maurizio Trevisan, P.I.s**) to conduct the study.

We wish to acknowledge the following individuals for their contributions to the study and the generation of this report.

Investigators

Carlos Crespo, DrPH, MS
Department of Social and
Preventive Medicine

Laurene Tumiel-Berhalter, PhD
Department of Family
Medicine

Donald Rowe, PhD
School of Public Health and
Health Professions

Steering Committee	
Jeannine Monteleone, M.S.W	Department of Family Medicine, Field Supervisor
Gary Brice, Ed.D.	Kaleida Health
Charlotte Crawford	LakePlain Healthcare Network
Dennis Horrigan, M.S.	P2 Collaborative
Kathy Leonard, M.S.	HealthforAll, Inc
Robert Ludwig	Community Health Foundation of Western and Central New York, Trustee
Larry Senn	WVA Hospital
Robert Watkins	Department of Family Medicine

Contributors

Department of Biostatistics

Randy Carter, PhD
Terry Mashtare, MStat
Austin Miller, MBA
Amy Sheehan, BA
Chris Purdy, B.A.

D'Youville College

Walter Iwanenko, PhD
Judy Schiffert, PhD
James Notaro, PhD

Department of Social and
Preventive Medicine

Kevin A. Lopez, BA
Josh Arbesman, BA
Nick Willett

Department of Family Medicine

John Taylor, MBA

Community Health Foundation of
Western and Central New York

Amber Slichta, BS, RN

School of Public Health and Health
Profession

Maurizio Trevisan, MD, MS
Jamie Muhleisen, M.P.H.

Western New York Health Risks Assessment Trend Report 2004 Table Of Contents

	Page
Comparison of Demographic makeup, 1999 and 2004.....	4
Percentage of People Reporting Having No Medical Insurance, 1999 and 2004	5
Percentage of People Who Are Obese, 1999 and 2004	6
Percentage of People Reporting No Regular Source of Care, 1999 and 2004	7
Percentage of People Reporting Currently Smoking, 1999 and 2004	8
Percentage of People Reporting a Doctor’s Diagnosis of Diabetes, 1999 and 2004	9
Percentage of People Reporting a Doctor’s Diagnosis of High Cholesterol, 1999 and 2004	10

INTRODUCTION

In 1999 and 2004 telephone surveys were conducted to determine the health status of adults in the eight counties of Western New York (Niagara, Orleans, Genesee, Wyoming, Erie, Chautauqua, Cattaraugus, and Allegany). This report highlights change over time on 6 key questions in the region as a whole. Data is provided both graphically and numerically. Detailed reporting of results, including information on performance of specific counties, can be found in the reports section of the Health Risks Assessment website, <http://www.wnyhra.org>.

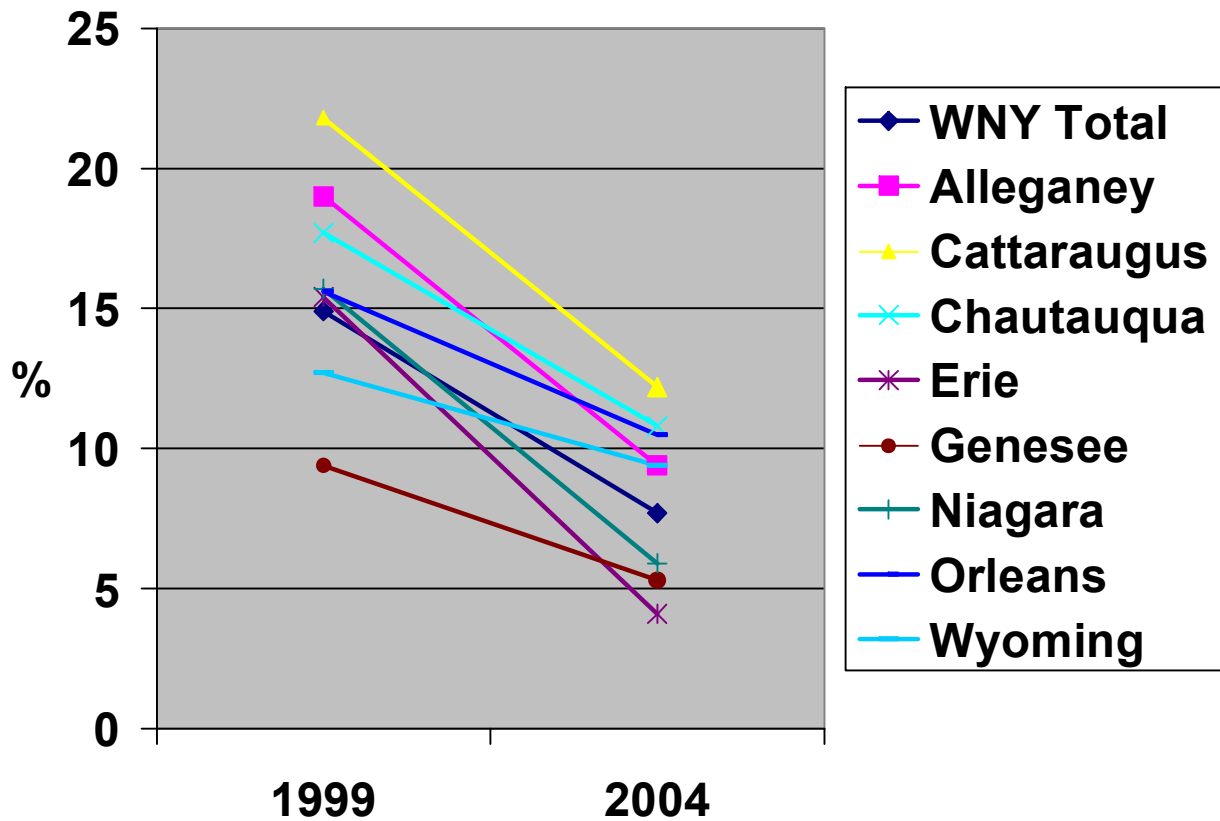
Table 1 compares gender, age and race between the 1999 and 2004 samples. Information on people from the supplemental areas added in the 2004 survey is not included in this report. Information from the 2000 U.S. Census is included to show representativeness of the sample.

Table 1: Comparison of 1999 and 2004 sample demographics to 2000 U.S. Census

	1999 %	2004 %	2000 Census %
Gender			
Male	45.3	45.3	47.4
Female	54.7	54.7	52.6
Age			
18 – 39	44.9	33.4	38.4
44 – 64	42.5	48.0	41.1
65+	12.6	18.6	20.5
Race			
Caucasian	88.6	91.9	88.8
African American	7.2	3.0	8.5
Other	4.2	5.1	3

Overall the sample is representative for gender, age and race. Slight discrepancies from the census data do exist.

Chart 1: Percentage of People Reporting Having No Medical Insurance, 1999 and 2004

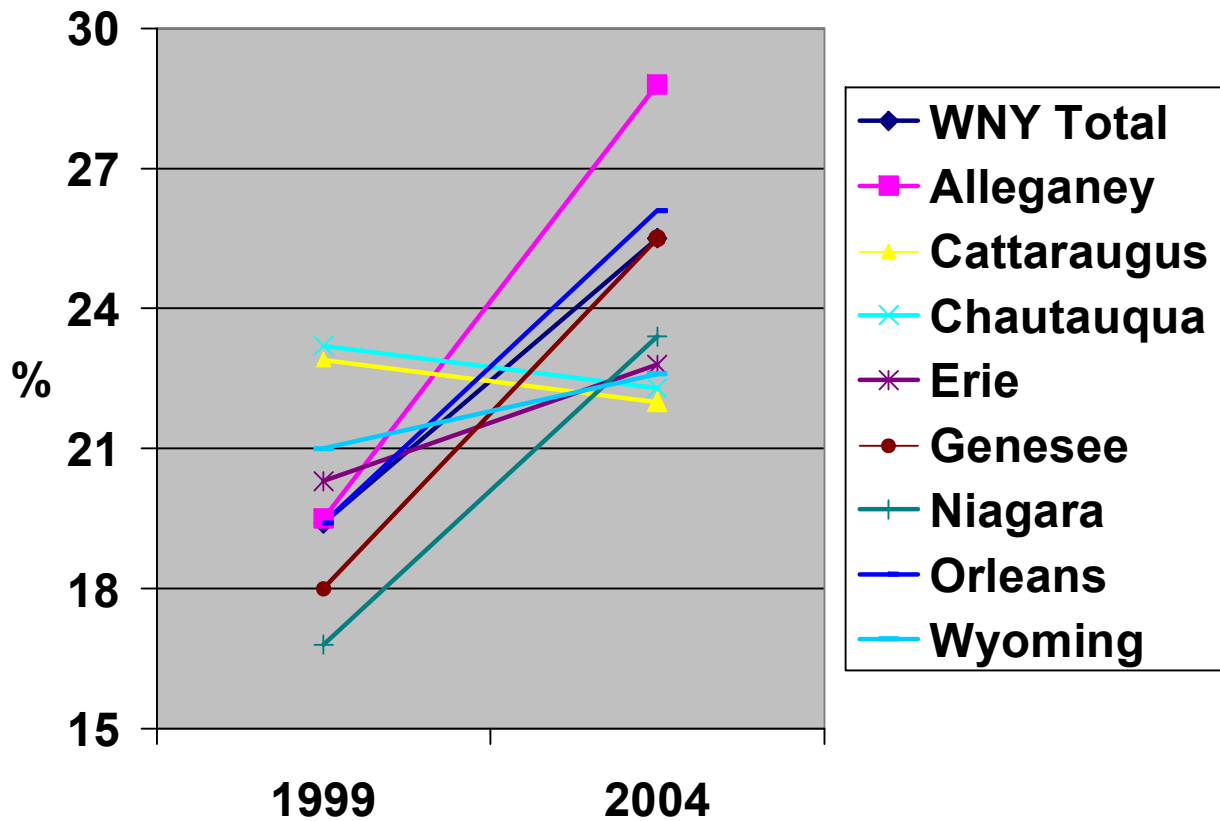


WNY Total P < .001

County	1999	2004	Change	% Change
Allegany	19	9.4	- 9.6	- 50.5
Cattaraugus	21.8	12.2	- 9.6	- 44.0
Chautauqua	17.7	10.8	- 6.9	- 39.0
Erie	15.4	4.1	- 11.3	- 73.4
Genesee	9.4	5.3	- 4.1	- 43.6
Niagara	15.7	5.9	- 9.8	- 62.4
Orleans	15.6	10.5	- 5.1	- 32.7
Wyoming	12.7	9.4	- 3.3	- 26.0
WNY Total	14.9	7.2	- 7.7	- 51.7

There was a statistically significant decrease in percent of people reporting having no medical insurance in WNY. Of the eight WNY counties, Erie saw the greatest drop in percentage of people without medical insurance. Allegany, Cattaraugus and Niagara counties showed reductions of nearly 10%

Chart 2: Percentage of People Who Are Obese, 1999 and 2004

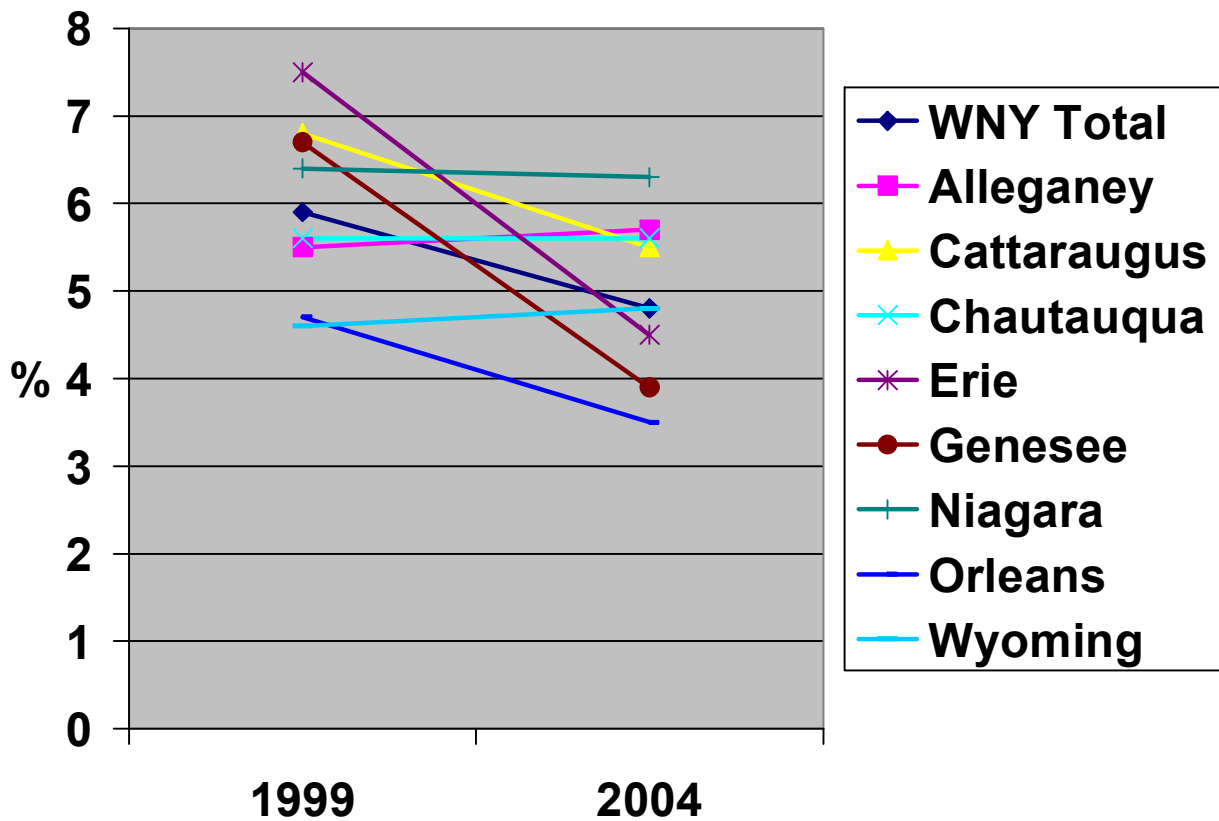


WNY Total P < .001

County	1999	2004	Change	% Change
Allegany	19.5	28.8	+ 9.3	+ 47.7
Cattaraugus	22.9	22	- 0.9	- 3.9
Chautauqua	23.2	22.3	- 0.9	- 3.9
Erie	20.3	22.8	+ 2.5	+ 12.3
Genesee	18	25.5	+ 7.5	+ 41.7
Niagara	16.8	23.4	+ 6.6	+ 39.3
Orleans	19.4	26.1	+ 6.7	+ 34.5
Wyoming	21	22.6	+ 1.6	+ 7.6
WNY Total	19.4	24.7	+ 5.3	+ 27.3

The percentage of people in WNY who were obese increased significantly between 1999 and 2004. Allegany, Genesee, Niagara and Orleans Counties saw the largest increases in obesity. Chautauqua and Cattaraugus counties saw small decreases in obesity.

Chart 3: Percentage of People Reporting No Regular Source of Care, 1999 and 2004

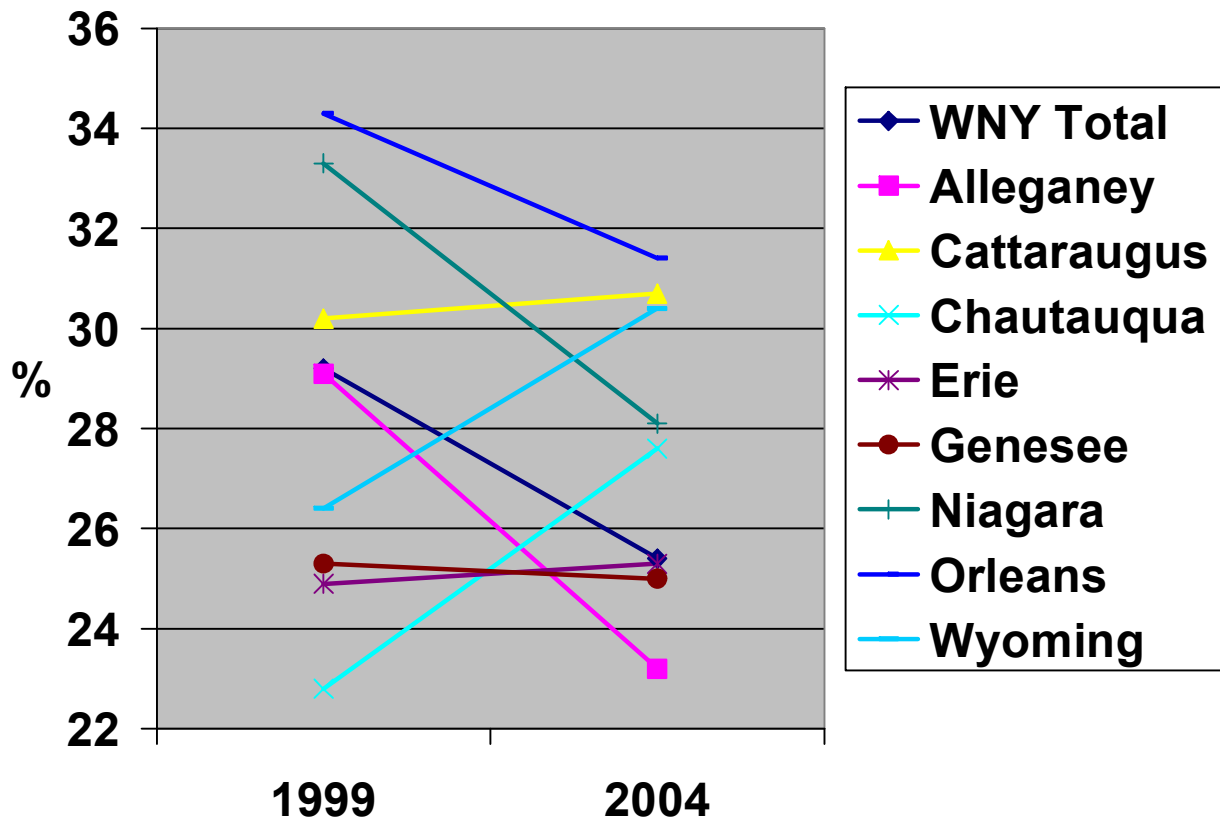


WNY Total P = .01

County	1999	2004	Change	% Change
Alleganey	5.5	5.7	+ 0.2	+ 3.6
Cattaraugus	6.8	5.5	- 1.3	- 19.1
Chautauqua	5.6	5.6	- 0	- 0.0
Erie	7.5	4.5	- 3	- 40.0
Genesee	6.7	3.9	- 2.8	- 41.8
Niagara	6.4	6.3	- 0.1	- 1.6
Orleans	4.7	3.5	- 1.2	- 25.5
Wyoming	4.6	4.8	+ 0.2	+ 4.3
WNY Total	5.9	4.7	- 1.2	- 20.3

The percentage of people in WNY reporting no regular source of care decreased significantly. Erie and Genesee counties showed the greatest improvement. Wyoming and Alleganey counties showed slight increases in percentage of residents with no regular source of care.

Chart 4: Percentage of People Reporting Currently Smoking, 1999 and 2004

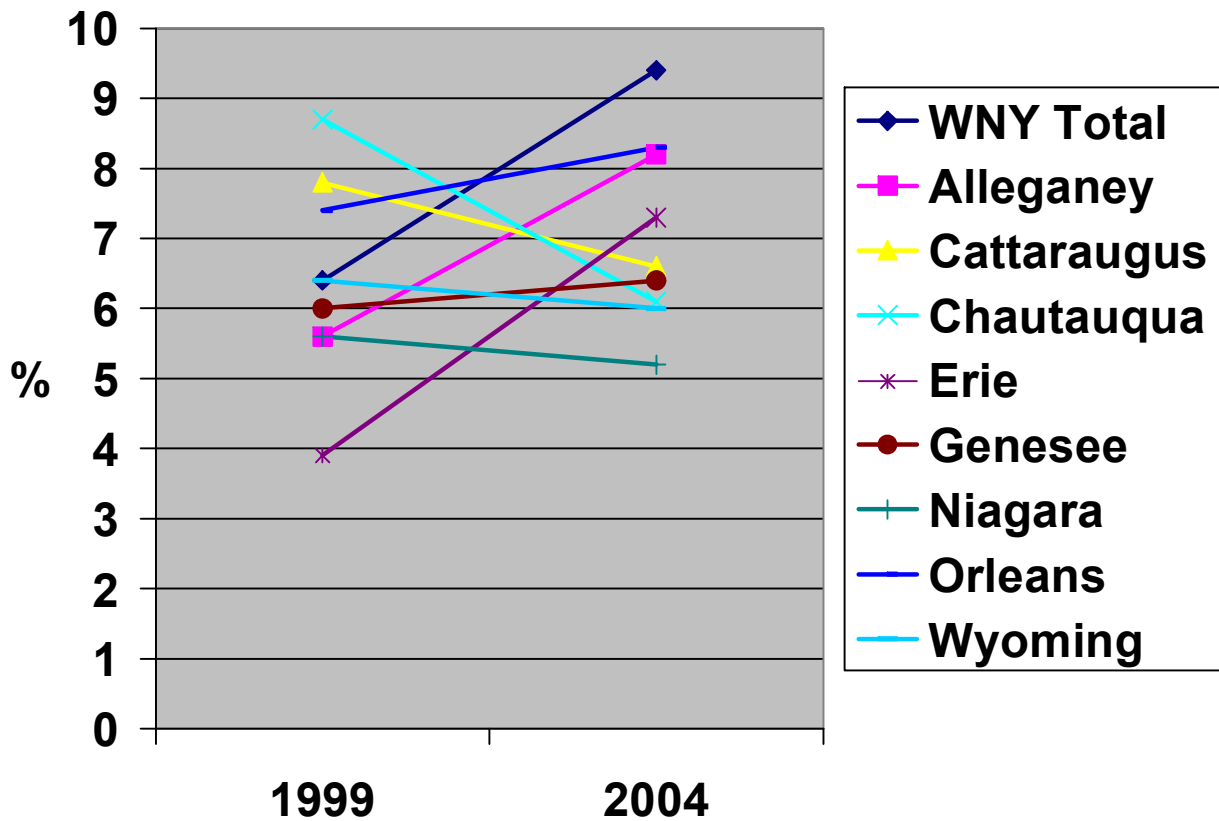


WNY Total P < .001

County	1999	2004	Change	% Change
Allegany	29.1	23.2	- 5.9	- 20.3
Cattaraugus	30.2	30.7	+ 0.5	+ 1.7
Chautauqua	22.8	27.6	+ 4.8	+ 21.1
Erie	24.9	25.3	+ 0.4	+ 1.6
Genesee	25.3	25	- 0.3	- 1.2
Niagara	33.3	28.1	- 5.2	- 15.6
Orleans	34.3	31.4	- 2.9	- 8.5
Wyoming	26.4	30.4	+ 4	+ 15.2
WNY Total	29.2	25.2	- 4.0	- 13.7

Although the overall percentage of people in WNY reporting currently smoking decreased significantly between 1999 and 2004. This is not a trend in all counties. These decreases occurred in Orleans, Genesee, Niagara and Allegany Counties. Increases in prevalence of smoking was seen in Cattaraugus, Chautauqua, Erie and Wyoming counties.

Chart 5: Percentage of People Reporting a Doctor's Diagnosis of Diabetes, 1999 and 2004

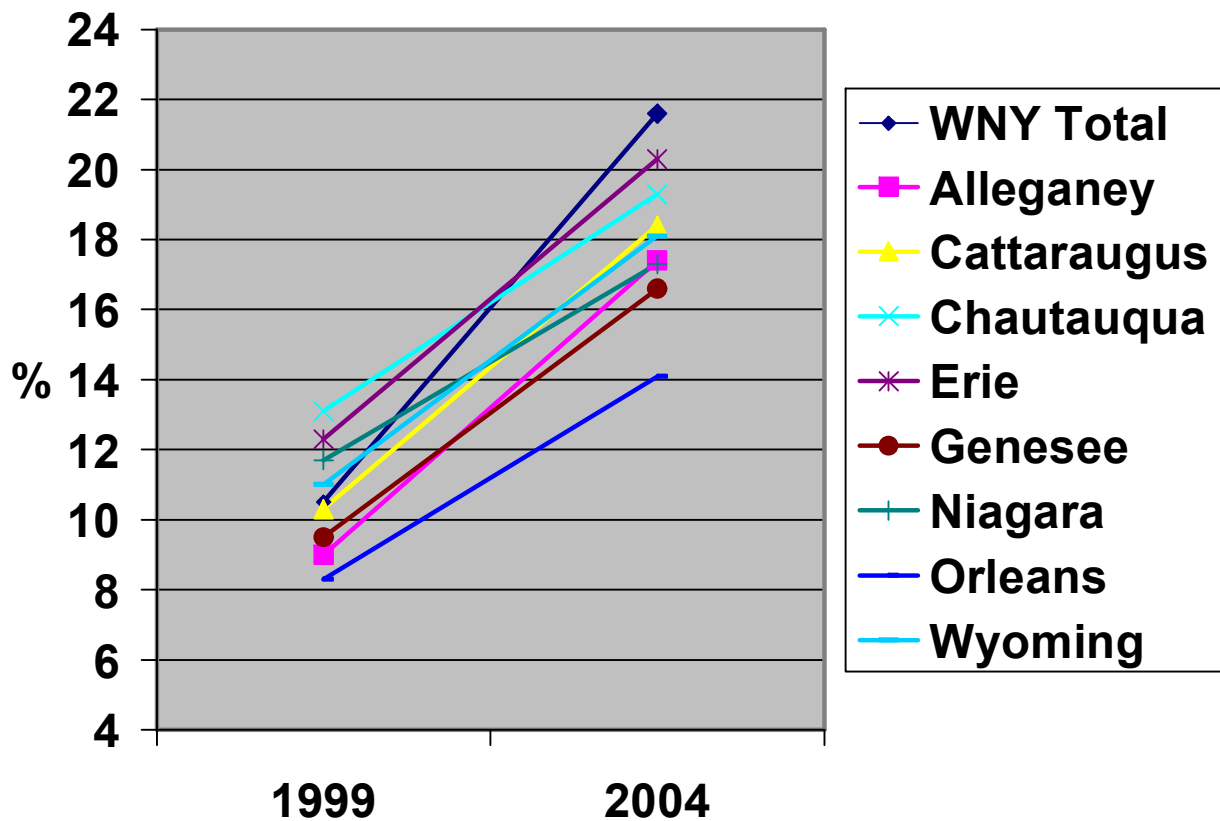


WNY Total P < .001

County	1999	2004	Change	% Change
Allegany	5.6	8.2	+ 2.6	+ 46.4
Cattaraugus	7.8	6.6	- 1.2	- 15.4
Chautauqua	8.7	6.1	- 2.6	- 29.9
Erie	3.9	7.3	+ 3.4	+ 87.2
Genesee	6	6.4	+ 0.4	+ 6.7
Niagara	5.6	5.2	- 0.4	- 7.1
Orleans	7.4	8.3	+ 0.9	+ 12.2
Wyoming	6.4	6	- 0.4	- 6.3
WNY Total	6.4	8.6	+ 2.2	+ 34.4

The overall percentage of people in WNY reporting a doctor's diagnosis of diabetes increased significantly between 1999 and 2004. Increased rates were found in Allegany, Erie, Genesee and Orleans counties. Chautauqua, Cattaraugus and Niagara counties had decreases in percentage of people reporting diabetes. It is unclear if these results indicate a true increase in prevalence of diabetes or if they are a result of increased testing and awareness.

Chart 6: Percentage of People Reporting a Doctor's Diagnosis of High Cholesterol, 1999 and 2004



WNY Total P < .001

County	1999	2004	Change	% Change
Allegany	9	17.4	+ 8.4	+ 93.3
Cattaraugus	10.3	18.4	+ 8.1	+ 78.6
Chautauqua	13.1	19.3	+ 6.2	+ 47.3
Erie	12.3	20.3	+ 8	+ 65.0
Genesee	9.5	16.6	+ 7.1	+ 74.7
Niagara	11.7	17.3	+ 5.6	+ 47.9
Orleans	8.3	14.1	+ 5.8	+ 69.9
Wyoming	11	18.1	+ 7.1	+ 64.5
WNY Total	10.5	21.6	+ 11.1	+ 106.7

WNY showed a significant increase in the percent of people with doctor-diagnosed high cholesterol. This trend is consistent across counties. It is unclear if these results indicate a true increase in overall cholesterol or if it is a result of increased testing and awareness.

Western New York Public Health Alliance Health Risks Assessment Trend Report 2004

Summary

This report serves as a reference for changes in key health variables throughout Western New York between 1998 and 2004. Progress has been made in improving some issues; others require greater attention.

The percentage of people with medical insurance and the number of people with a regular source of care increased. The percentage of smokers decreased. These improvements in access and lifestyle may be due to programs targeted towards addressing these issues or may be a result of overall societal shifts.

Obesity, diabetes and high cholesterol in Western New York increased between 1998 and 2004. The increase in rates of diabetes and high cholesterol may be explained by increased awareness and testing for these diseases. The increased rate of obesity is concerning given the large number of associated problems.